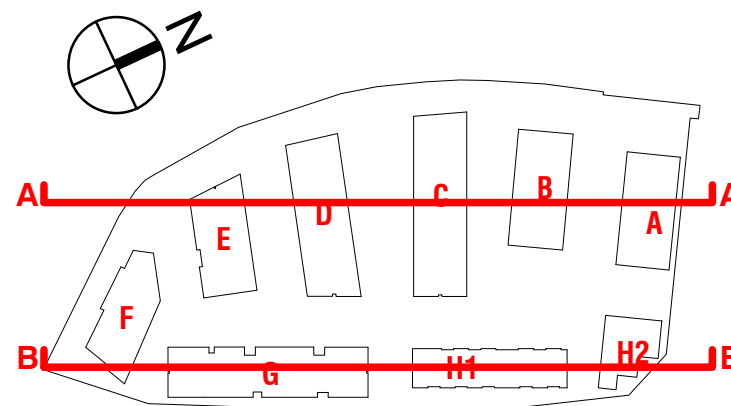
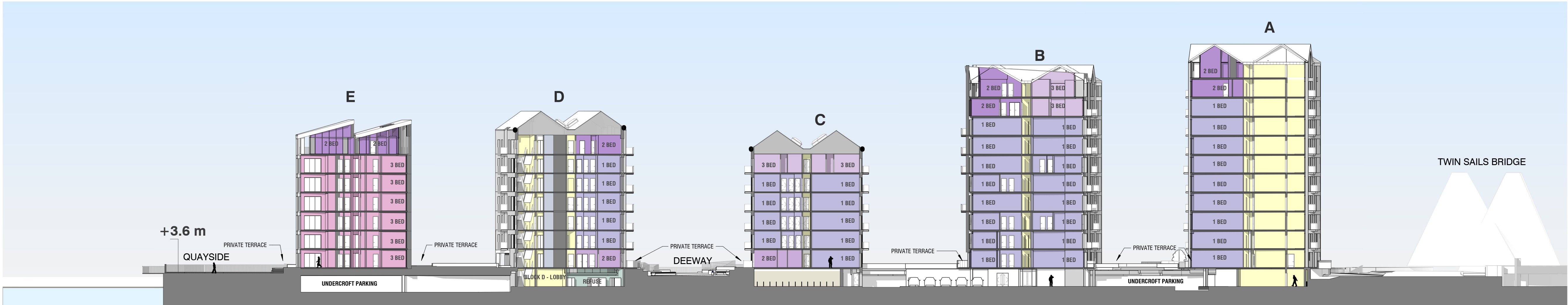


Orientation

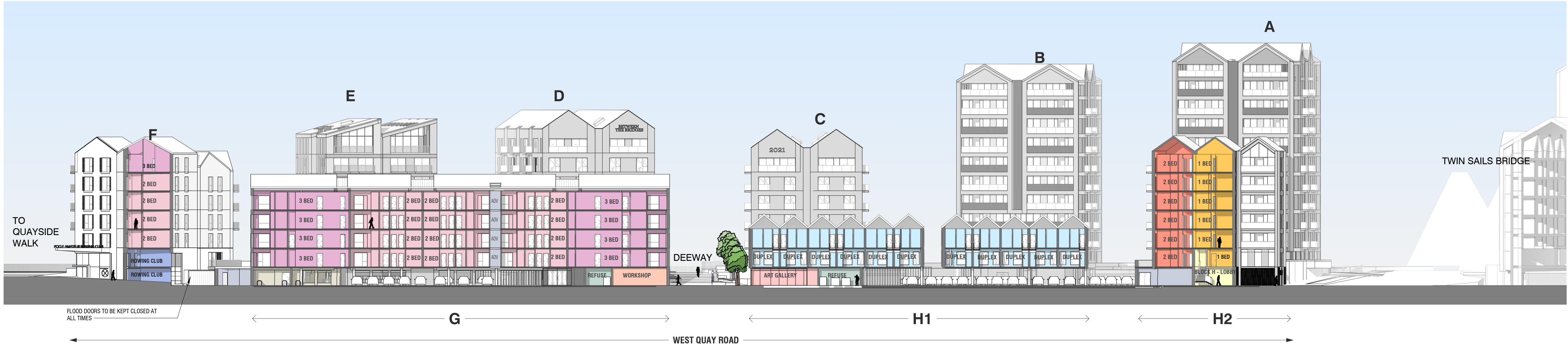
Key Plan



- LEGEND
- LOBBY/CORRIDOR
 - DUPLEX
 - 1 BED TYPICAL RESI
 - 2 BED TYPICAL RESI
 - 2 BED RETIREMENT
 - 3 BED RETIREMENT
 - 2 BED PENTHOUSE
 - 3 BED PENTHOUSE
 - 2 BED AFFORDABLE HOUSING
 - 1 BED AFFORDABLE HOUSING



Section AA'
1 : 350



Section BB'
1 : 350

P04	04.02.22	Amendments to planning drawings issued on 26.03.21	SM	AR
P03	26.03.21	Amendments to planning drawings issued on 05.04.19	SS	AR
P02	08.07.19	Amendments to planning drawings issued on 05.04.19	SM	AR
P01	05.04.19	Updated information for planning issued on 28.05.18	SM	AR

Rev. Date	Revision	By	Checked
-----------	----------	----	---------

leonard design architects
4th floor, Albion House
5-13 Canal Street
Nottingham, NG1 7EG, United Kingdom
t. +44 (0) 115 945 0080
e. office@leonarddesignarchitects.com

Client
Reuben & Morgan Ltd.

Project
West Quay Road, Poole

Drawing Title
Section AA' & BB'

Project Number	Suitability
0625	S4
Drawn by	Checked by
SS	SM
Scale @A1	Date
As indicated	05.04.19
File Identifier	Revision
0625 - LDA - ZZ - ZZ - DR - A - 08050	P04

Purpose of Issue
PLANNING

Project Status
PLANNING

